



STRATTON OAK ESTATES



 1  1  1  E

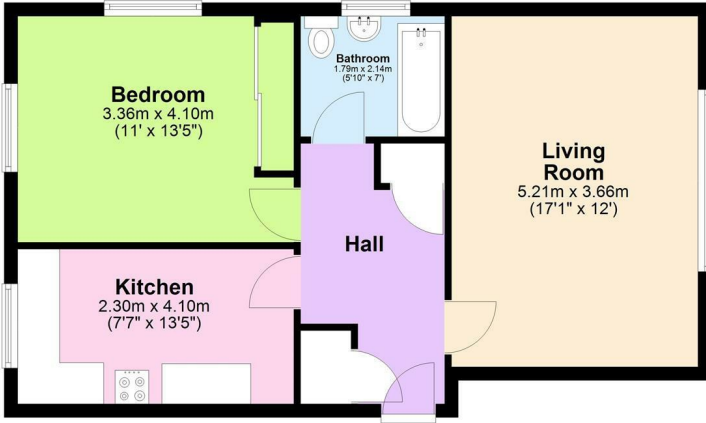
47 Southbourne Road, Bournemouth, BH6 5AE

Guide Price £180,000

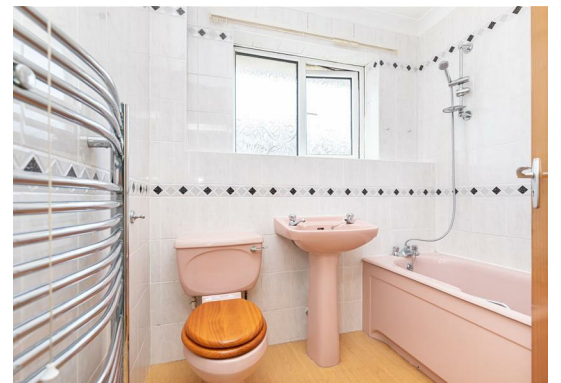
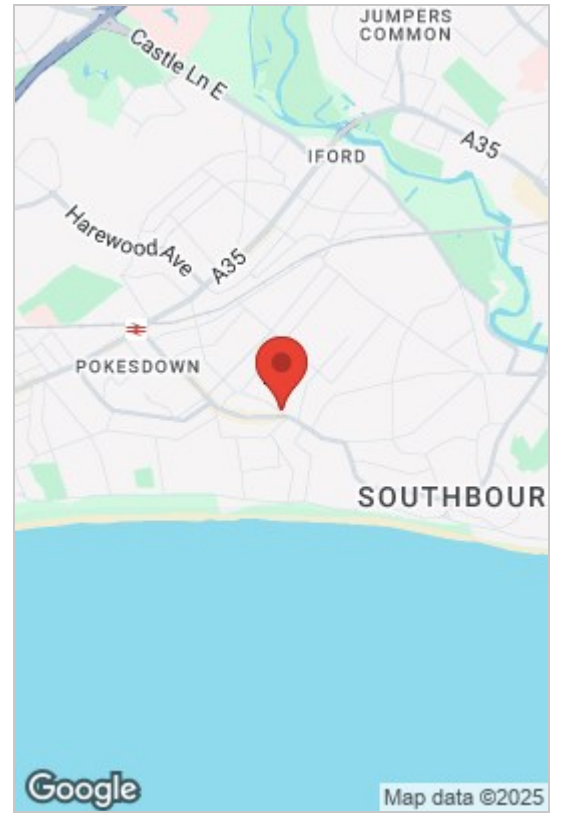
GREEN PARK GARDENS EXETER PARK ROAD, DORSET, BOURNEMOUTH, BH2 5BD
INFO@STRATTONOAKESTATES.COM | T. 01202 237580 | WWW.STRATTONOAKESTATES.COM

Second Floor

Approx. 56.1 sq. metres (603.9 sq. feet)

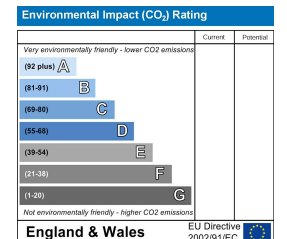
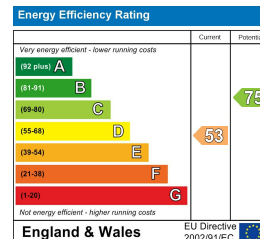


Total area: approx. 56.1 sq. metres (603.9 sq. feet)



- Ideal opportunity to refurbish and personalise a home in central Southbourne.
- Well-proportioned double bedroom with fitted storage and dual aspect.
- Bathroom with nostalgic suite in full working order.
- Access to communal gardens and private garage with additional parking available.
- Large southerly-facing lounge with plenty of natural light.
- Separate kitchen with scope for redesign.
- Two internal storage cupboards plus a garage to the rear.
- Prime location just a short walk from Southbourne High Street and award-winning beach.

Located in the heart of ever-popular Southbourne, this second-floor one-bedroom flat in Morris Court is a fantastic opportunity to design and create your ideal home. With a bright southerly aspect, generous living space and potential for modernisation, this flat is perfectly placed just a short stroll from Southbourne's vibrant High Street and stunning sandy beach.



Whilst these details are thought to be correct, their accuracy cannot be guaranteed and do not form part of any contract. It should be noted that we have not tested any fixtures, fittings, equipment, apparatus or services, therefore we cannot verify that they are in working order or fit for purpose. Solicitors should be used to confirm that any moveable items described within these details are in fact part of the sale agreement. While we try to ensure measurements are correct they are not guaranteed and purchasers are advised to take their own measurements before ordering any fixtures or fittings.